

Wordpress

Managing content on PBR's WordPress website.

- [Common Tasks - Wordpress Backend](#)

Common Tasks - Wordpress Backend

TOTAL FIRE BAN / RAILWAY CLOSURE HOMEPAGE TILE

We have a set of templated callout boxes hidden at the top of the homepage, to utilise in different scenarios including TFB/Railway closures, limited timetables operating due to weather events etc.

The copy in these modules have been kept high level on purpose, as affected passengers also receive comms via email and SMS with more specific information about their circumstances.

Important to note:

- These sections are **only** to be published if the railway and LVC is closed altogether.
- In the event of cancelled services / limited timetable operating but the Railway still being open (example scenario: Gembrook service terminating at Lakeside due to a fallen tree in Wright Forest) external comms is **limited to the affected pax only** and no notice is published on the website.

Templated callout boxes (hidden) on the homepage include the following:



PUFFING BILLY RAILWAY CLOSURE SUNDAY 23 FEBRUARY 2025 - TOTAL FIRE BAN

Please note that due to a declared Total Fire Ban and Extreme Fire Danger for this date, all services are cancelled and Puffing Billy Railway will be closed for the interest of our staff, volunteers and visitors. If you are booked to travel with us on this date, Puffing Billy Railway will be in touch with you via email. We do apologise for the inconvenience and trust you understand our reasoning for taking this action.



HOT TEMPERATURE WARNING - SUNDAY 2 AND MONDAY 3 FEBRUARY

Please note that due to the extreme weather forecast for these dates, Puffing Billy Railway will be running a reduced timetable of services. If your booked train journey on one of these dates is impacted, Puffing Billy Railway will be in touch with you via email. We do apologise for the inconvenience and trust you understand our reasoning for taking this action.



PUFFING BILLY RAILWAY CLOSED - [INSERT DATE]

Please note that due to the extreme weather forecast for this date, Puffing Billy Railway will be **CLOSED**. If you are booked to travel with us on this date, Puffing Billy Railway will be in touch with you via email. We do apologise for the inconvenience and trust you understand our reasoning for taking this action.

LIMITED TIMETABLE - FRIDAY 23 - THURSDAY 29 FEBRUARY 2024

The Belgrave to Menzies Creek section of the railway is cleared and deemed safe after last week's storm. We will be operating an altered timetable of train services between Belgrave and Menzies Creek from Friday 23 to Thursday 29 February 2024. If you have a booking with us for these dates, your train journey will be different. An email has been sent to those impacted by these changes with further details.

Due to safety concerns from falling trees, Emerald Lake Park and Nobellus Heritage Park are closed until further notice by Cardinia Shire Council. Please note, the Lakeside Visitor Centre is closed during this time.

We're currently evaluating the operational status of the railway beyond this time and are aiming to restore our full timetable as soon as we can.

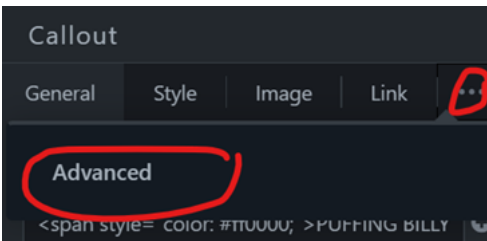
Thank you for your understanding during this time. We can't wait to welcome you back on board!

In the event of a railway closure, select the one that is most relevant to the circumstances.

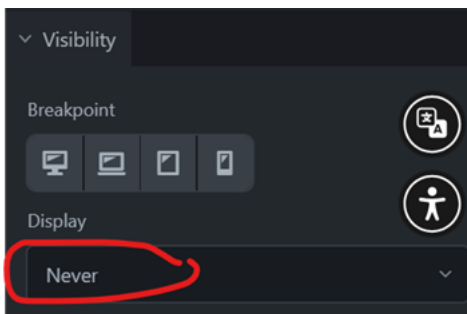
1. Change the date/s in the header
2. Change the body copy if required
3. Make the callout box visible (see step by step guide on next page)



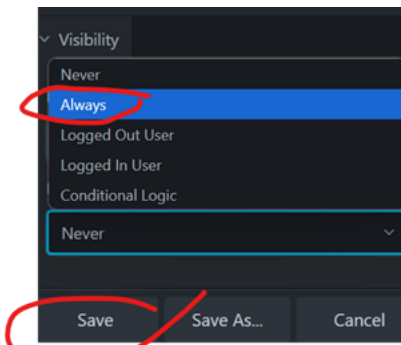
Click on the three dots to bring up the Advanced tab. Click Advanced.



You'll see that the visibility is set to 'Never'.



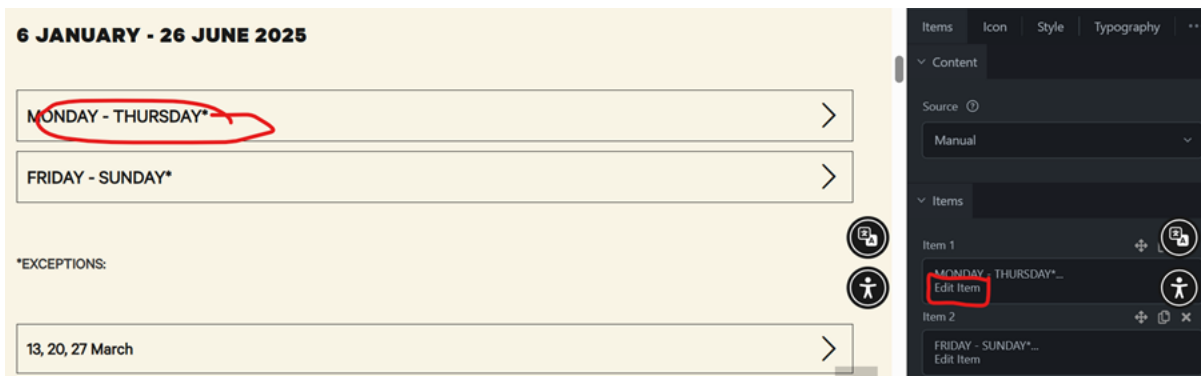
Change it to 'Always' and hit 'Save' before publishing the changes to the homepage in the top right corner.



EDITING SAVED MODULES AND ROWS

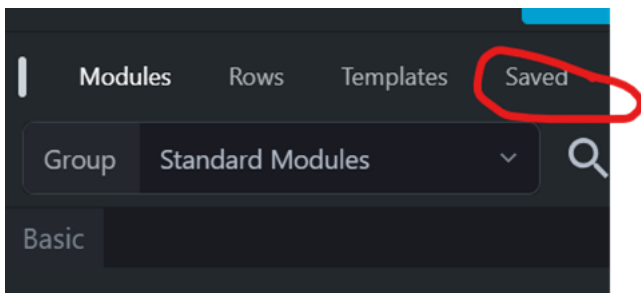
Go to the page you want to change a module or row in and click on Beaver Builder.

1. Navigate to the content piece you want to change. Example being used here is the Jan-June 2025 timetable.
2. Click on the advanced accordion module, which brings up the editing pane on the right. If we want to look at the content for Monday - Thursday, we can click on "edit item".

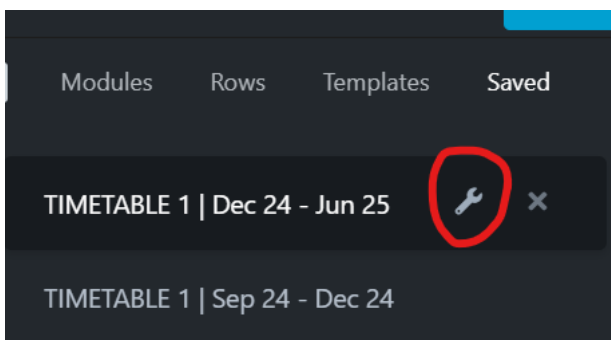


This shows us that the content here is in fact a saved row named **'TIMETABLE 1 | Dec 24 - Jun 25'**.

Next, we go to the 'Saved' tab in the editing pane to locate our saved row.



All the saved rows are listed first (in alphabetical order) followed by all saved modules. Scroll down to find the saved row we want to edit.



TIMETABLE 1 | DEC 24 – JUN 25

[Home](#) > TIMETABLE 1 | Dec 24 – Jun 25

BELGRAVE TO LAKESIDE RETURN

1 hour each way

- 10.00 am depart Belgrave | 11.00 am arrive Lakeside | 12.25 pm depart Lakeside | 1.20 pm arrive Belgrave
- 11.10 am depart Belgrave | 12.10 pm arrive Lakeside | 2.15 pm depart Lakeside | 3.10 pm arrive Belgrave
- 2.15 pm depart Belgrave | 3.10 pm arrive Lakeside | 4.15 pm depart Lakeside | 5.10 pm arrive Belgrave

Belgrave to Menzies Creek, Belgrave to Gembrook and Lakeside to Gembrook journeys are not operating on these days.

Make the required edits before hitting done and Publish.

This brings us back to the main page where the saved row is shown. Publish this page as well and check the accordion to ensure that the updated information is there.

Repeat for any other saved modules and rows.

UPDATING PRICING (ADVANCED ACCORDIONS/TABLES IN MAIN CONTENT)

Prices for products and experiences are normally outlined either in an advanced accordion (such as for Grazing Boxes below) or a table (such as for event fares).

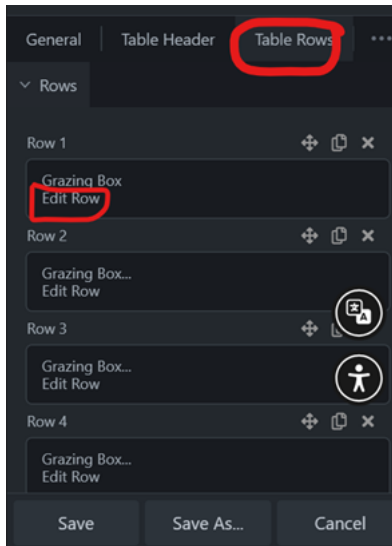
GRAZING BOX FOR 2 | \$45 >

GRAZING BOX + PICNIC BLANKET | \$80 >

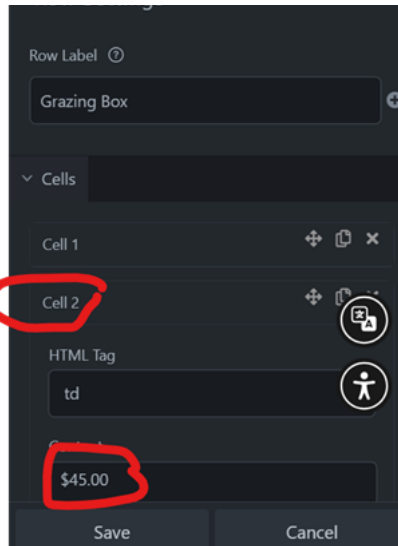
GLUTEN FREE OPTIONS -

- Grazing Box for 2 - GLUTEN FREE | \$50
- Grazing Box + Picnic Blanket - GLUTEN FREE | \$85

Ticket prices in tables can be updated as per below by clicking on the table itself in Beaver Builder:



STEP 1:



STEP 2:

Update and save before publishing the page the table is sitting on.

REMOVING A PAGE FROM THE NAVIGATION

To go any page on the website (not in Beaver Builder mode), and click on Puffing Billy in the top left corner. This brings up a drop-down box – click on Menu.



We need to remove the page from both the Main Menu (being shown on Desktops) and Mobile (shown on phones and some tablets/smaller screen sizes).

Select a menu to edit: Main Menu ▼

Add menu items

Pages

- 404 menu
- Footer Menu (Footer Menu)
- Language menu
- MAIN LEVEL 1 2022
- Main Menu**
- Mobile (no mega menu) (Top Bar Menu, Header Menu)
- Mobile menu NEW
- SECONDARY navigation
- TICKET menu
- WooComm buttons

Most Recent View

Explore Puffing B

Password protected

Puffing Billy Rail

Main menu:

Navigate to the page you wish to remove and click on the down arrow.

EVENTS Page ▼

Steam & Spirits: Puffing Billy Page ▼

Railway x Four Pillars Gin *sub item*

Click on 'Remove' followed by 'Save Menu'.

Steam & Spirits: Puffing Billy
Railway x Four Pillars Gin *sub item* Page ▲

Navigation Label
Steam & Spirits: Puffing Billy Railway x Four Pillars Gin

Menu Parent: EVENTS ▼ Menu Order: 1 of 7 ▼

Move [Up one](#) [Down one](#) [Out from under EVENTS](#)

Original: [Steam & Spirits: Puffing Billy Railway x Four Pillars Gin](#)

[Remove](#) [Cancel](#)

Paint and Sip at Puffing Billy
Railway *sub item* Page ▼

[Save Menu](#) [Delete Menu](#)

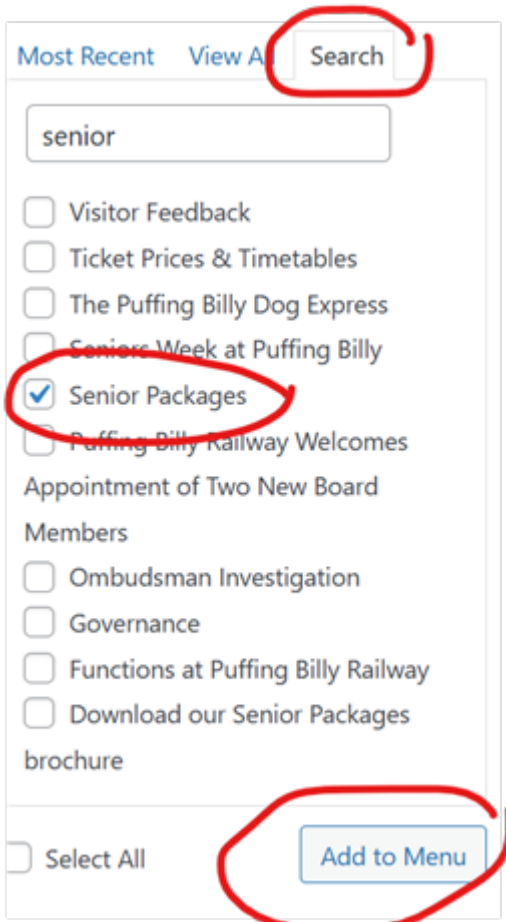
Mobile menu:

Navigate to the main menu (see screenshot above) and follow the same steps as for the Main Menu to remove the page from the Mobile Menu as well.

ADDING A PAGE TO THE NAVIGATION

1. Head to the menus screen, as per the previous section.
2. Select Main Menu
3. Go to the left-hand side of the screen, and search for the page you want to add from the list (alternatively scroll through all the pages listed). Tick the box next to the page and click 'Add to Menu'.

- This adds the page to the very bottom of the list of pages, and you can drag and drop it to the applicable page, for instance as a subpage under 'Experiences'. Once it is in the spot you want it, click 'Save Menu'.
- Repeat process for Mobile menu.



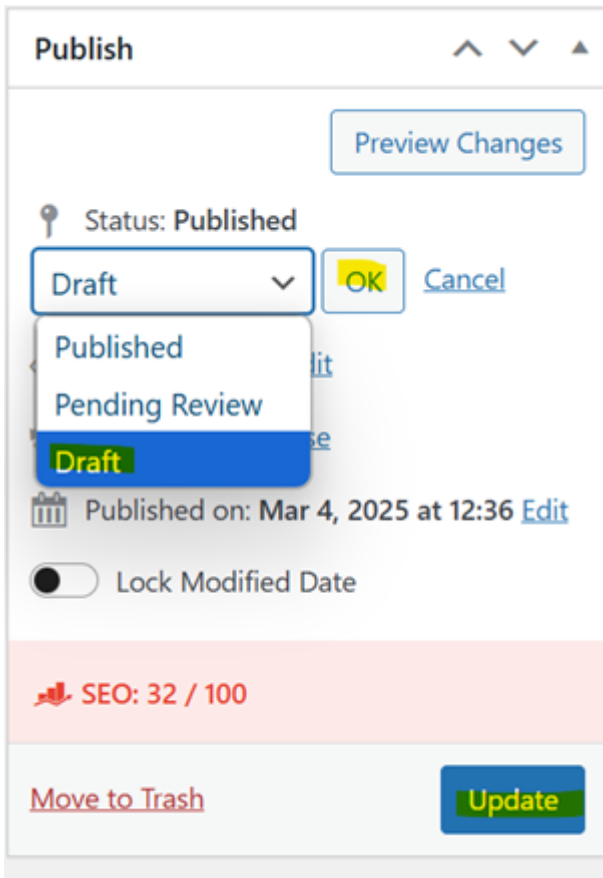
BRINGING A PAGE BACK TO DRAFTS

Open the page you wish to bring back to drafts

Click on 'edit page' along the top

Go to the Publish tab on the right-hand side, change the status to "draft", click "OK" and then "Update" further down. The page is back in draft mode.

After this is completed, follow the steps listed above to remove the page from the navigation too.



ADDING OR REMOVING PASSWORD PROTECTION TO A PAGE IN REVIEW

Open the page you wish to bring back to drafts

Click on 'edit page' along the top

Go to the Publish tab on the right-hand side

Change the Visibility from 'Public' to 'Password protected' and select a password (I tend to use some type of acronym that reflects the page or something totally random). What you select doesn't matter as long as it is taken note of and share with the people who need to access/review the page.

To remove the password protection from a page (for instance at the launch of an event), change visibility from 'Password protected' to 'Public' and hit 'Update'.

Publish ^ v ▲

[Preview Changes](#)

📌 Status: **Published** [Edit](#)

👁 Visibility: **Public**

Public

Password protected

Password:

Private

[Cancel](#)

🕒 Revisions: 11 [Browse](#)

📅 Published on: Mar 4, 2025 at 12:36 [Edit](#)

Lock Modified Date

📈 SEO: 32 / 100

[Move to Trash](#)