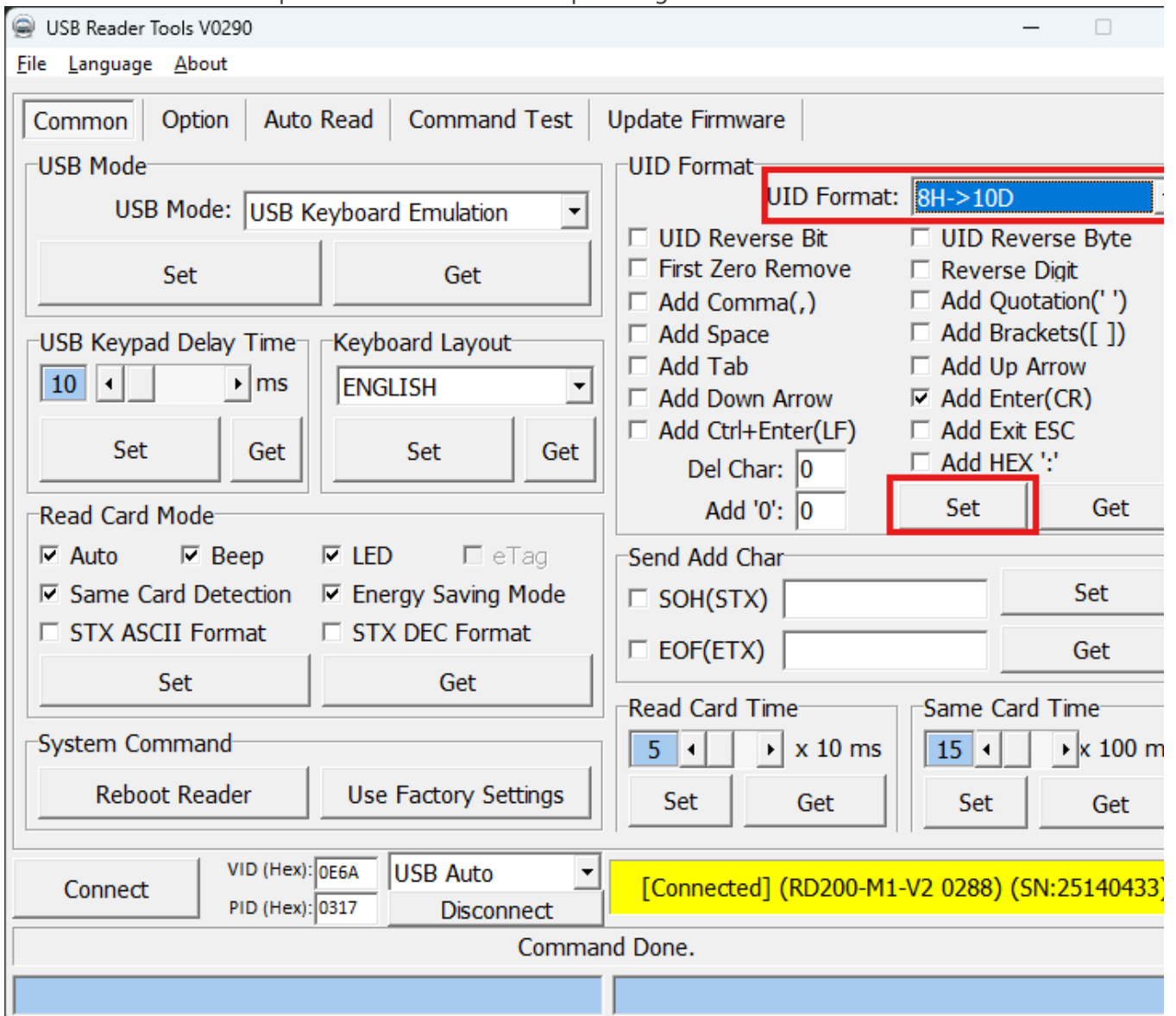


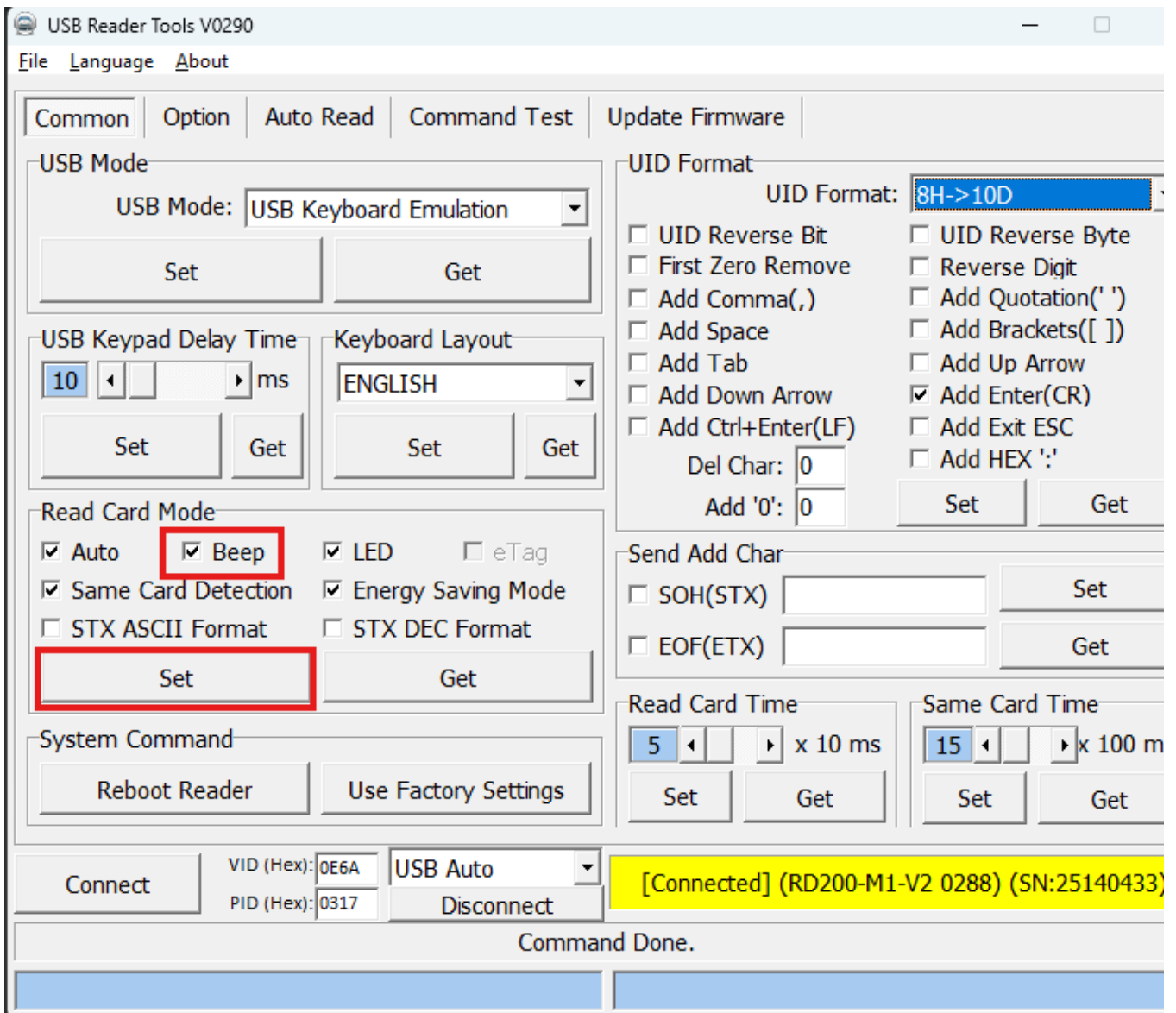
Programming RFID Reader

RFID readers can be used to login to Custom Linc and possibly IdealPos.

1. Install USB Reader tools exe. This can be found in the I drive: I:\Software_Drivers\USB Reader Tool
2. Plug a RFID reader into your PC.
3. Change the UID format to use: 8H -> 10D. This changes it to use 10 decimals rather than 8 hexadecimals. Then press "set" in the corresponding box.



4. You can also program it to beep when used or not beep.



5. Unplug the RFID reader, all done.

Revision #1

Created 8 July 2025 03:02:47 by Keegan Hunt

Updated 8 July 2025 03:12:41 by Keegan Hunt