

Accessing Mimecast Awareness Training

Mimecast Awareness Training can be accessed in 2 ways -

- Directly via the link in the email sent

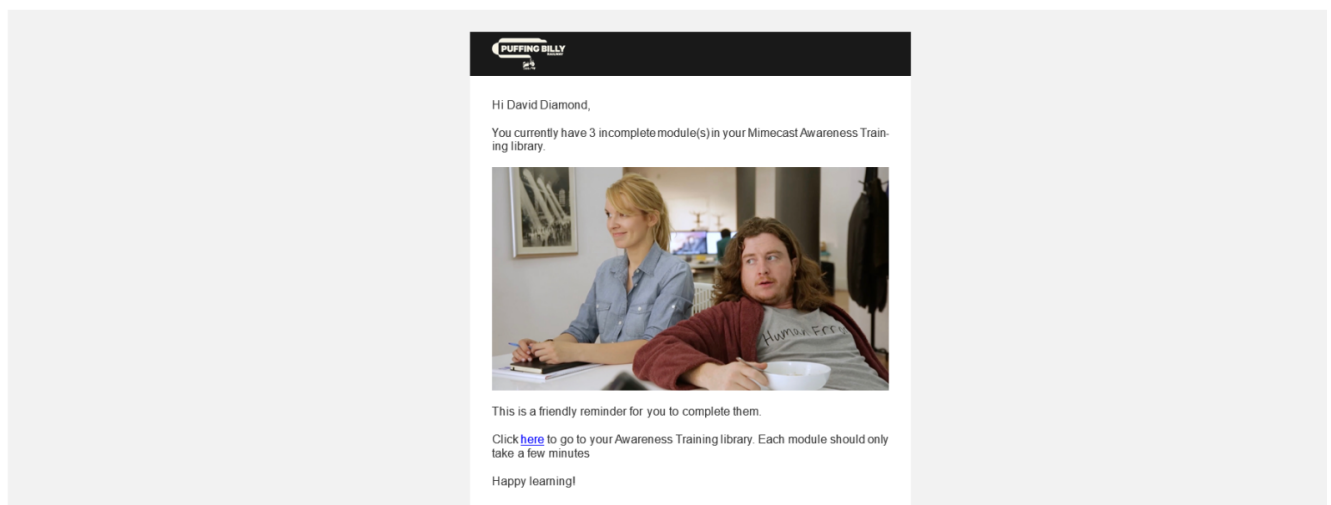
Awareness Training Reminder



PBR IT Department <awareness@pbr.org.au>
To: David Diamond

[If there are problems with how this message is displayed, click here to view it in a web browser.](#)

Reply Reply All Forward Tue 5/11/2



You will be prompted to login, use your email address and password

You will be prompted for a DUO verification, and then directed to a screen like below that will list any pending training modules.





Company Wide Training

Watch engaging security awareness training videos, and then complete a short assessment to keep your knowledge up to date both on and offline.



Pending Modules

The following module(s) need to be completed.





PHISHING 02:13

Free Cruise for Two
TOPIC: RANSOMWARE



PASSWORDS 01:53

You Had Me at Hello
TOPIC: STRONG PASSWORD



INFO PROTECTION 01:38

Go Grande
TOPIC: STOLEN LAPTOP

Previously Viewed Modules



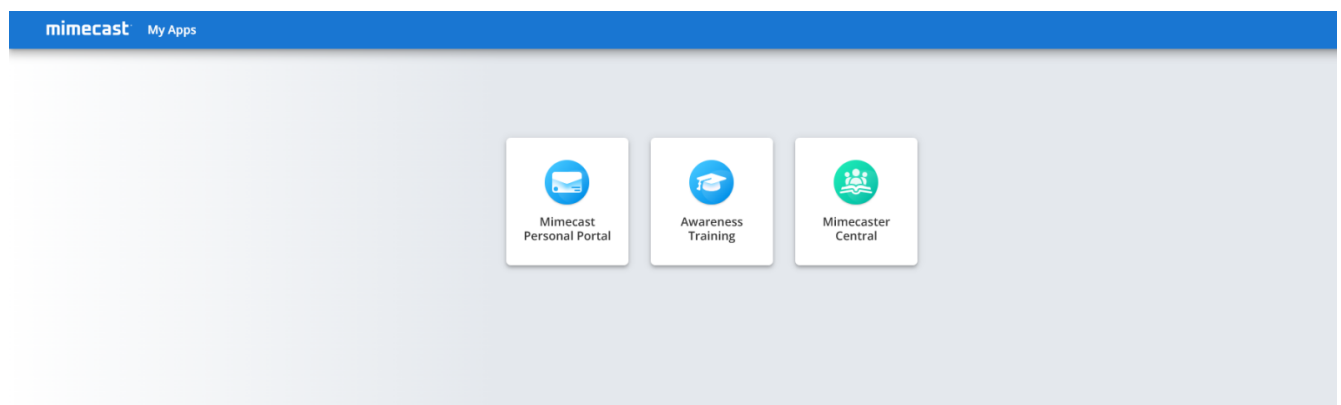
Simply click on the module to start the training

- By logging into your Mimecast Portal

Open a web browser and navigate to <https://login-au.mimecast.com/>

You will be prompted to login, use your email address and password

You will be prompted for a DUO verification, and then should be directed to a screen as per below.



Click on Awareness Training and then you will be directed to a screen like below that will list any pending training modules.

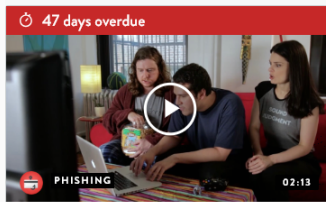


Company Wide Training

Watch engaging security awareness training videos, and then complete a short assessment to keep your knowledge up to date both on and offline.

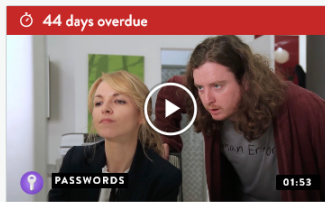
Pending Modules

The following module(s) need to be completed.



Free Cruise for Two

TOPIC: RANSOMWARE



You Had Me at Hello

TOPIC: STRONG PASSWORD



Go Grande

TOPIC: STOLEN LAPTOP

Previously Viewed Modules



Simply click on the module to start the training

Revision #1

Created 5 November 2024 22:56:34 by David Diamond

Updated 5 November 2024 23:31:39 by David Diamond