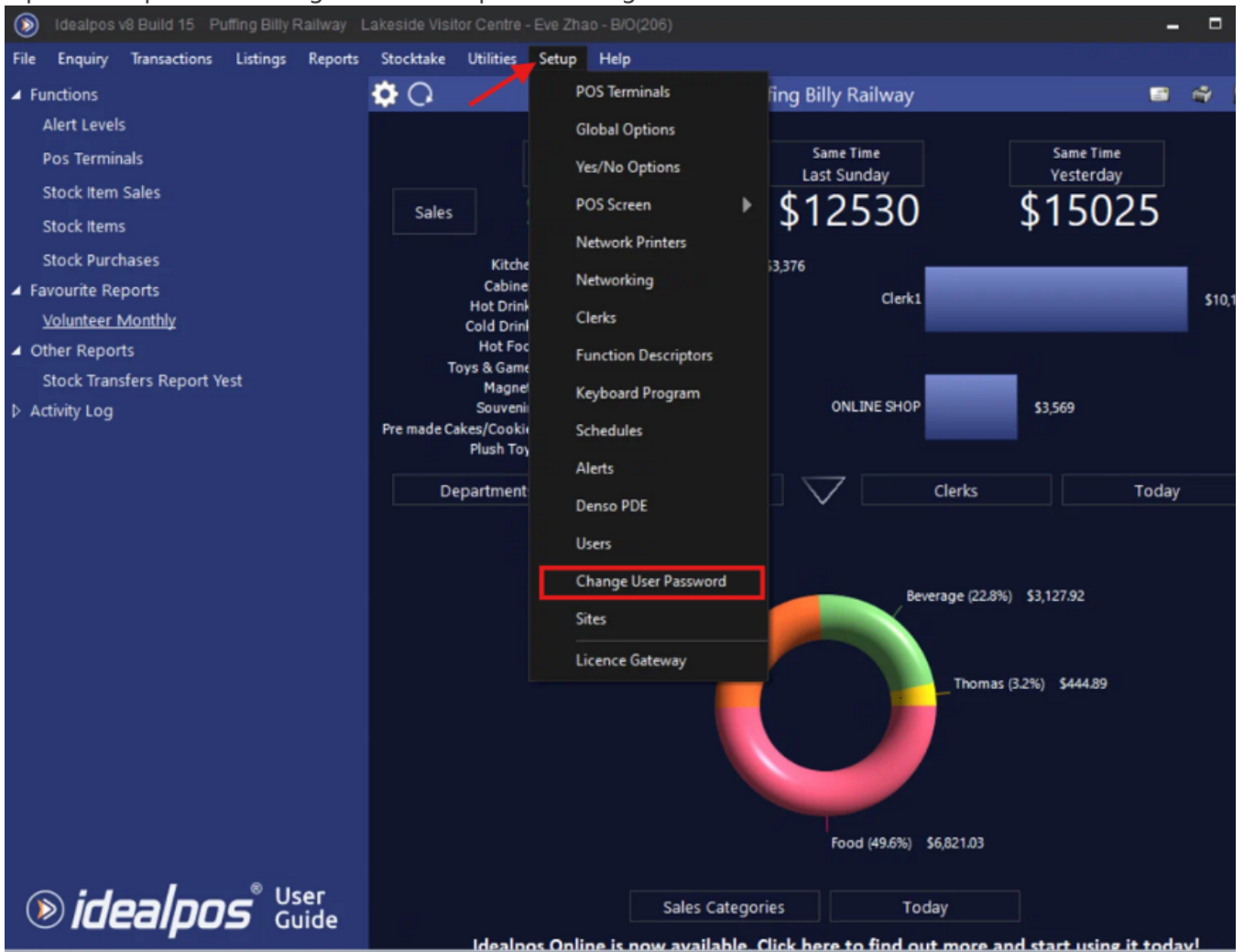


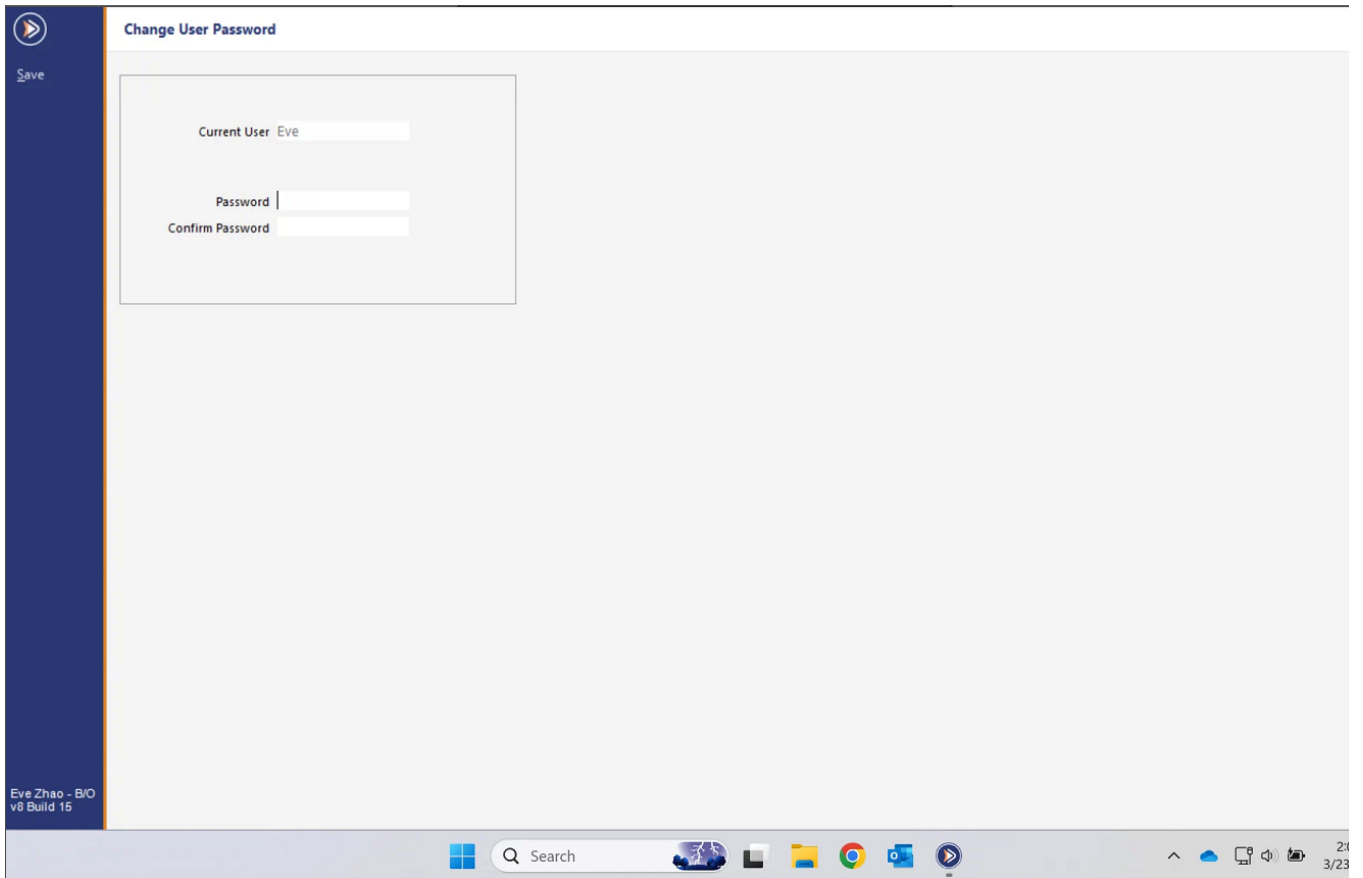
# Idealpos Password Change

This article will show you how to change your password in idealpos.

1. Open idealpos and navigate to "Setup" & "Change User Password".



2. Here you can change your password. The password has to be less than 10 characters as per idealpos standard.



Revision #1

Created 23 March 2025 03:02:27 by Keegan Hunt

Updated 23 March 2025 03:06:35 by Keegan Hunt