

Generators

At PBR we have multiple generators scattered around the sites

- Kilvington Rd
- Belgrave
- LVC

Kilvington Rd & Belgrave are both network connected and can provide email alerts

- Kilvington Rd Generator

Kilvington Rd Generator

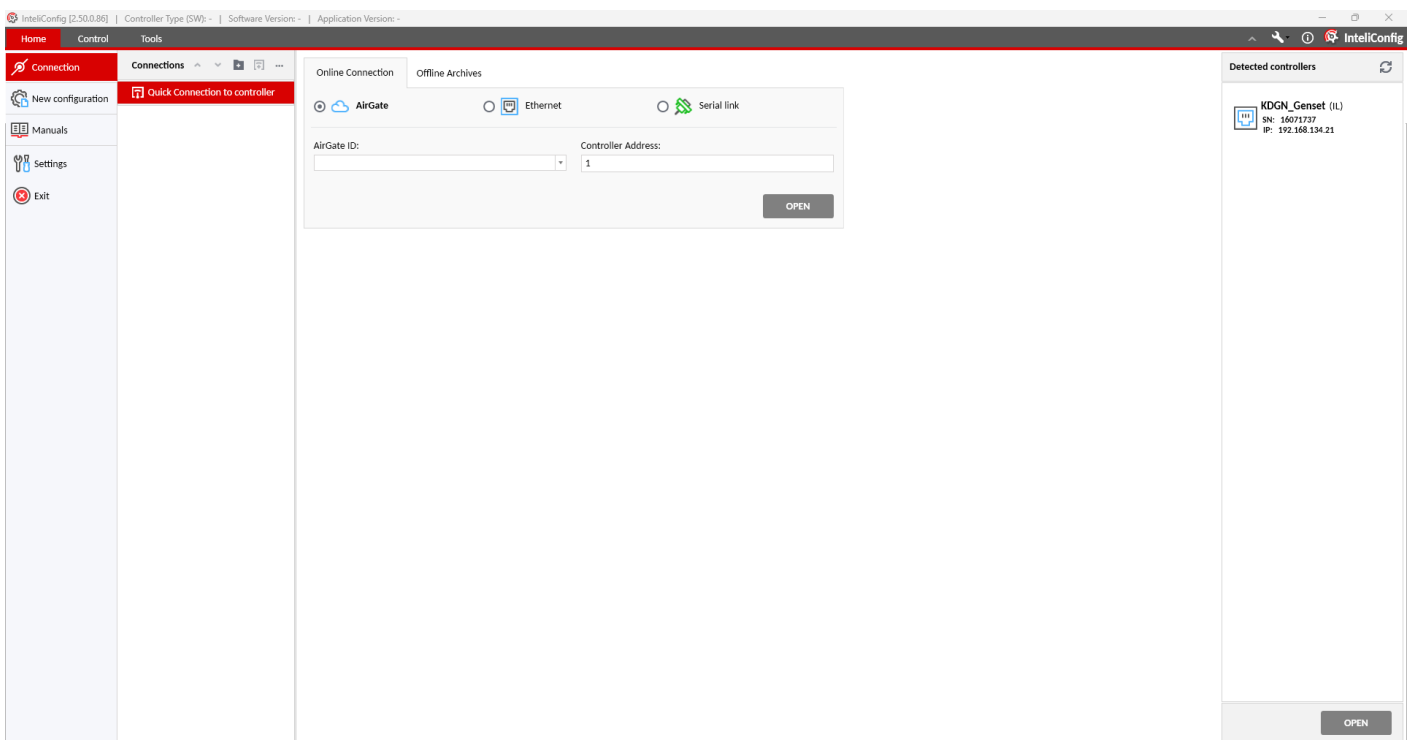
The Kilvington Rd generator is network connected with a static IP address of 192.168.134.21

You can access the settings and configuration via a web browser <http://192.168.134.21/>

Access Code for web portal is in 1Password

You can also access the setting and configuration via IntelliConfig software installed on a Windows PC. This can be downloaded from <https://www.comap-control.com/>

Open the IntelliConfig Application, select Connect To Controller



In the RHS window you should see KDCN_Genset, select it and click open, enter the password (in 1Password and is the same as above) for web browser access

If you need to find the SMTP or Network settings, navigate to SetPoints Tab, then select CM-Ethernet, and scroll down

Setpoints [KDBG_Genset] ✕

Setpoint Groups	Setpoint Name	Setpoint Value	Information
Basic Settings	E-mail Address 1	<input type="text" value="generator@pbr.org.au"/>	MODBUS Server ▲
Engine Settings	Message Language	<input type="text" value="English"/>	Original value: Disabled Default value: Disabled
Generator Settings	Time Zone	<input type="text" value="GMT-10:00"/>	
Scheduler	Event Message	<input type="text" value="ON"/>	Setpoint Description: ▲
Plug-In Modules	Wrn Message	<input type="text" value="ON"/>	Enable or disable MODBUS communication
CM-Ethernet	BOC Message	<input type="text" value="ON"/>	<div>Controller Help</div>
Alternate Config	Sd Message	<input type="text" value="ON"/>	Setting of parameters with "•" sign is not changed during configuration upload, to change its setting use controller front panel or Setpoints window in IntelliConfig, which is online connected to controller.
User buttons	SMTP User Name	<input type="text"/>	
	SMTP User Password	<input type="text"/>	
	SMTP Server Address	<input type="text" value="pbr-smtp-kl1.pbr.org.au:25"/>	
	SMTP Sender Address	<input type="text" value="KilvGen@pbr.org.au"/>	
	IP Address Mode	<input type="text" value="Fixed"/>	•
	IP Address	<input type="text" value="192.168.134.21"/>	•
	Subnet Mask	<input type="text" value="255.255.255.0"/>	•
	Gateway IP	<input type="text" value="192.168.134.1"/>	•
	DNS IP Address 1	<input type="text" value="10.1.8.90"/>	•
	DNS IP Address 2	<input type="text" value="10.1.8.91"/>	•
	MODBUS Server	<input type="text" value="Disabled"/>	•
	Web Interface	<input type="text" value="Enabled"/>	

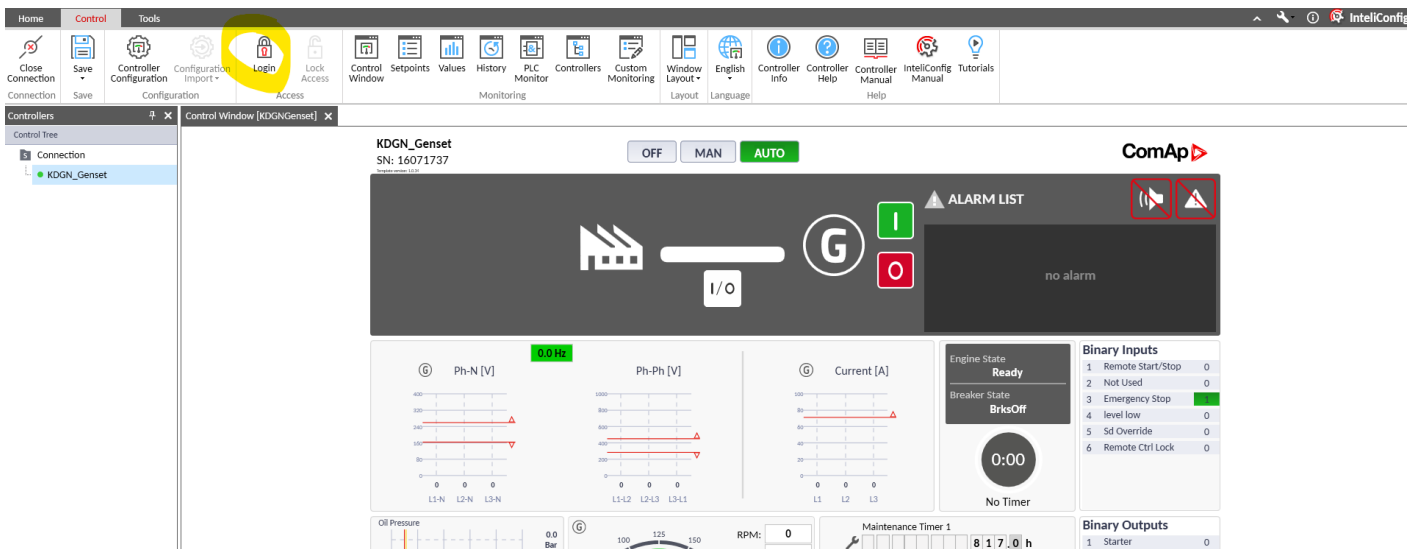
Currently configured to send alerts via email to generator@pbr.org.au, which is setup as a shared mailbox

All emails sent to this mailbox are now forwarded to helpdesk@pbr.org.au

Alternatively you can connect to the Generator via USB Cable, using the IntelliConfig Software

The USB port is located behind the LCD screen, so firstly you need to unlock the hatch covering the screen (keys in comms room), then you need to unscrew the 2 knobs to the RHS of the screen, the whole panel is hinged on the left and will swing open.. (be careful in there) plug in the usb cable and run the software on laptop and you should have access.

The administrator and user passwords are the same, to get edit or modify capabilities in the software, you will need to click login and enter the password in 1Password



Revision #2

Created 9 September 2024 05:14:33 by David Diamond

Updated 9 September 2024 05:16:00 by David Diamond