

Creating DFS

DFS was introduced to Puffing Billy November 2023. For assistance on how to create DFS please refer to the following doc:

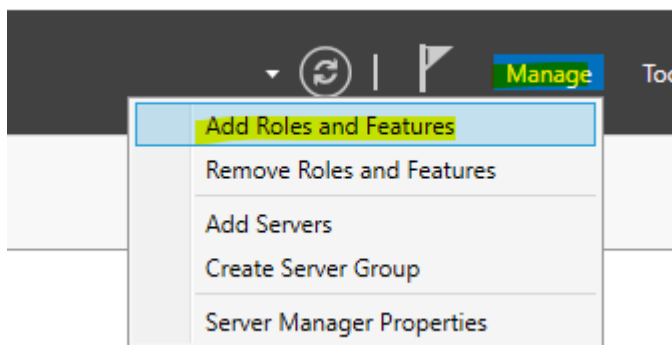
[DFS Namespaces overview | Microsoft Learn](#)

The main purpose of DFS is to redirect users to folder targets using a centralised path. In this instance our DFS path is \\pbr.org.au\pbrdfs and the majority of the folder targets are set to the Belgrave file server PBR-FS-B1.

*******NOTE: Before installing DFS roles make sure you have setup your shared drives on a windows file server or using a NAS. Ensure that access-based enumeration is disabled, and that the users group permission assigned to the shared drives has been removed. For more information on this please refer to; [Windows File Server Sh... | BookStack \(pbr.org.au\)](#) *******

To be able to install DFS, the roles must first be installed via server manager. For best practice I recommend you install the DFS namespace and DFS replication roles to all your DCs and to the servers acting as the folder target.

Go to Manage at the top right-hand corner of the screen and select Add Roles and Features.



Click Next

Before you begin

DESTINATION SERVER
PBR-DC-B1.pbr.org.au

Before You Begin

Installation Type
Server Selection
Server Roles
Features
Confirmation
Results

This wizard helps you install roles, role services, or features. You determine which roles, role services, or features to install based on the computing needs of your organization, such as sharing documents, or hosting a website.

To remove roles, role services, or features:
[Start the Remove Roles and Features Wizard](#)

Before you continue, verify that the following tasks have been completed:

- The Administrator account has a strong password
- Network settings, such as static IP addresses, are configured
- The most current security updates from Windows Update are installed

If you must verify that any of the preceding prerequisites have been completed, close the wizard, complete the steps, and then run the wizard again.

To continue, click Next.

☐ Skip this page by default

< Previous

Next >

Install

Cancel

Click Next

Select installation type

DESTINATION SERVER
PBR-DC-B1.pbr.org.au

Before You Begin

Installation Type
Server Selection
Server Roles
Features
Confirmation
Results

Select the installation type. You can install roles and features on a running physical computer or virtual machine, or on an offline virtual hard disk (VHD).

- ☒ **Role-based or feature-based installation**
Configure a single server by adding roles, role services, and features.
- ☐ **Remote Desktop Services installation**
Install required role services for Virtual Desktop Infrastructure (VDI) to create a virtual machine-based or session-based desktop deployment.

< Previous

Next >

Install

Cancel

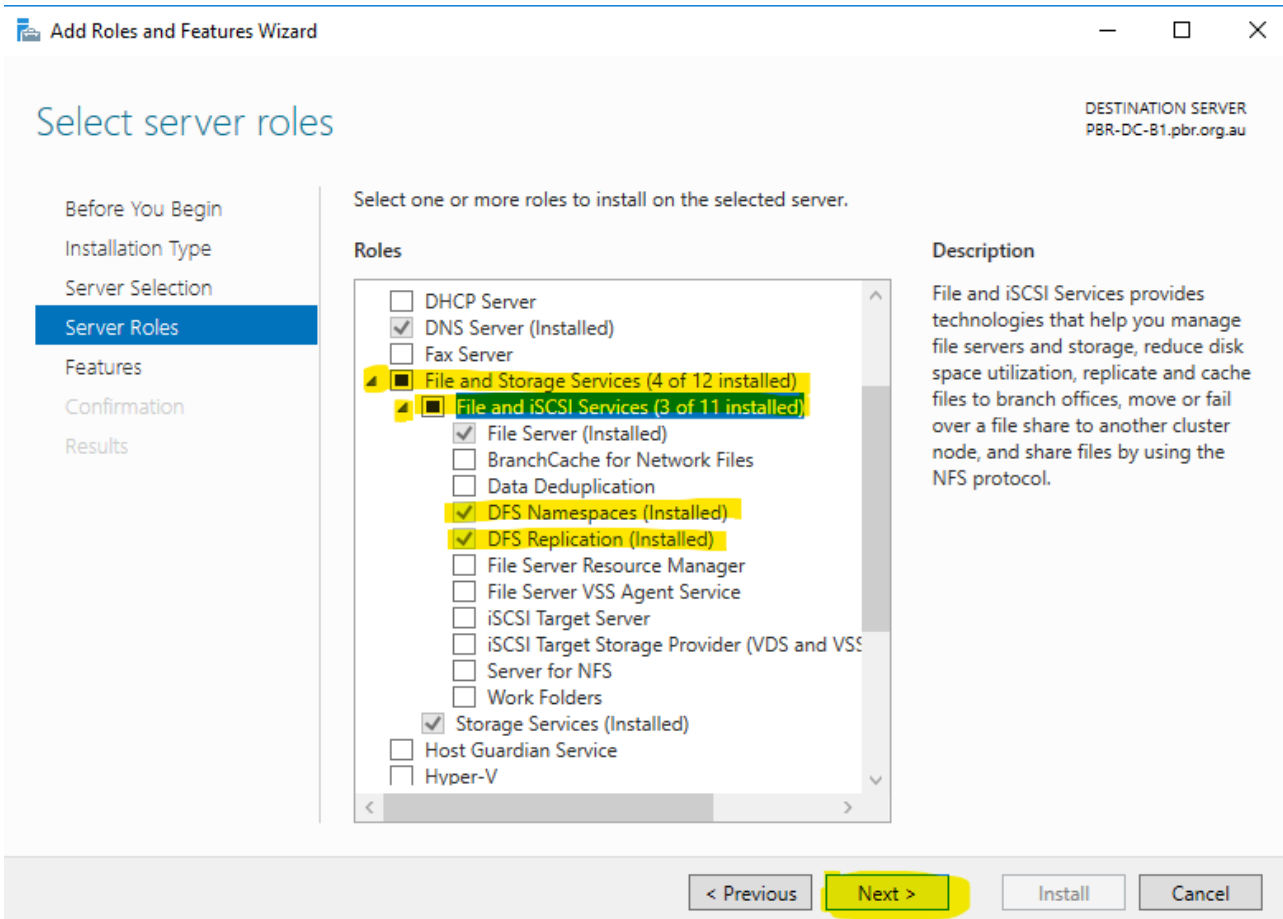
Click Next

The screenshot shows the 'Add Roles and Features Wizard' window. The title bar reads 'Add Roles and Features Wizard'. The main heading is 'Select destination server'. In the top right corner, it says 'DESTINATION SERVER PBR-DC-B1.pbr.org.au'. On the left, a navigation pane lists: 'Before You Begin', 'Installation Type', 'Server Selection' (highlighted), 'Server Roles', 'Features', 'Confirmation', and 'Results'. The main area contains the instruction 'Select a server or a virtual hard disk on which to install roles and features.' with two radio buttons: 'Select a server from the server pool' (selected) and 'Select a virtual hard disk'. Below this is a 'Server Pool' section with a 'Filter:' text box. A table lists the available servers:

Name	IP Address	Operating System
PBR-DC-B1.pbr.org.au	10.1.1.90	Microsoft Windows Server 2016 Standard

Below the table, it states '1 Computer(s) found' and provides a note: 'This page shows servers that are running Windows Server 2012 or a newer release of Windows Server, and that have been added by using the Add Servers command in Server Manager. Offline servers and newly-added servers from which data collection is still incomplete are not shown.' At the bottom, there are four buttons: '< Previous', 'Next >' (highlighted in yellow), 'Install', and 'Cancel'.

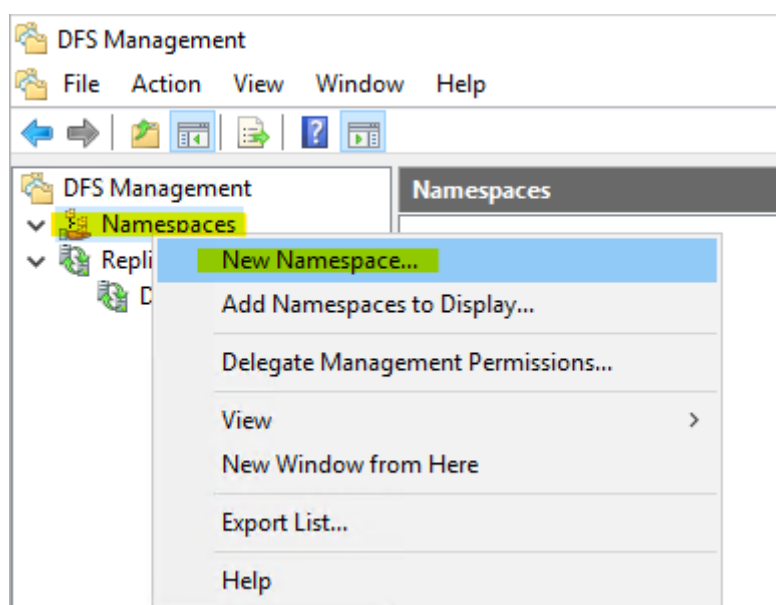
Scroll down to File and Storage services and click the drop-down options. Select DFS namespaces and DFS replication. Click Next.



Proceed through to the next steps and ensure the option to restart after installation is not selected.

Once the DFS roles have installed on all the desired servers go to DFS Management on one of the DCs (preferably the primary). DFS can be found under Windows Administrative tools or by searching for DFS on the search bar of the server.

Launch DFS. Right click on Namespaces and select new Namespace.



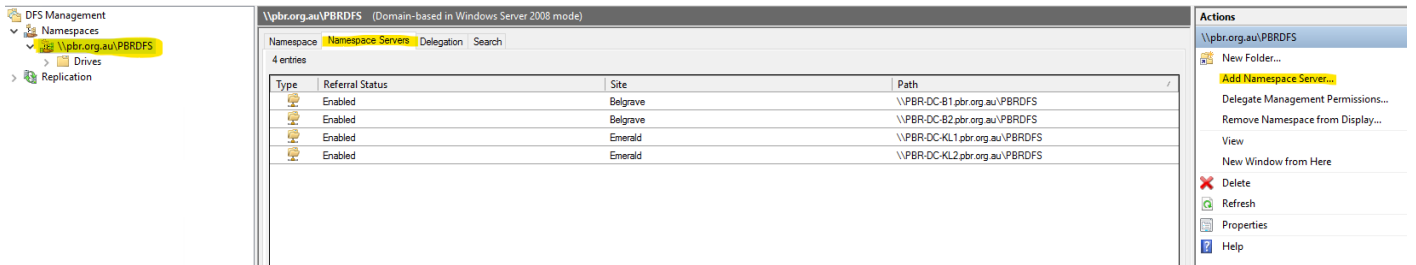
Use the search function and enter your domain name. In this case it was PBR.ORG.AU. Check name then click OK.

The image shows two overlapping Windows dialog boxes. The background window is the 'New Namespace Wizard' with the title bar 'New Namespace Wizard'. It has a left sidebar with 'Steps:' and five steps: 'Namespace Server', 'Namespace Name and Settings', 'Namespace Type', 'Review Settings and Create Namespace', and 'Confirmation'. The 'Namespace Server' step is selected. The main area of the wizard says: 'Enter the name of the server that will host the namespace. The server you specify will be known as the namespace server.' Below this is a 'Server:' label, a text input field, and a 'Browse...' button. The foreground window is the 'Select Computer' dialog box. It has a title bar 'Select Computer' and a close button. It contains the following fields and buttons: 'Select this object type:' with a dropdown showing 'Computer' and an 'Object Types...' button; 'From this location:' with a text input field containing 'pbr.org.au' and a 'Locations...' button; 'Enter the object name to select (examples):' with a text input field containing 'pbr.org.au' and a 'Check Names' button; and at the bottom, 'Advanced...', 'OK', and 'Cancel' buttons. The 'OK' button is highlighted with a yellow box. At the bottom of the wizard window, there are '< Previous', 'Next >', and 'Cancel' buttons.

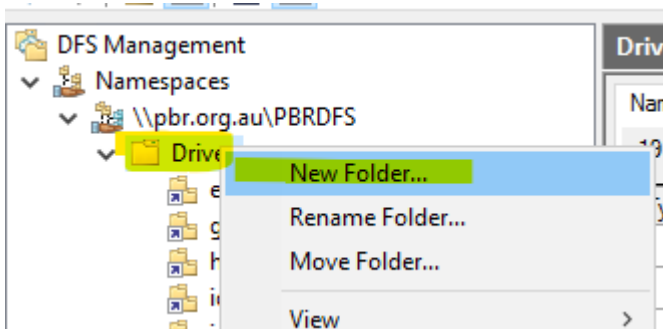
The next windows will ask more info for setup of DFS. The most important setting is the DFS root name and the settings to enable inherited permissions from folder targets. My preference is to set the default domain name with an abbreviated version of the domain folders by DFS e.g **\\pbr.org.au\pbrdfs.**

Once DFS is setup on one of the servers we will need to add other namespace servers to ensure redundancy. If the server hosting the DFS namespace goes down and this is the only one active as a namespace server, then DFS will be unavailable. Adding more namespace servers will ensure the DFS path is accessible when different DCs go down.

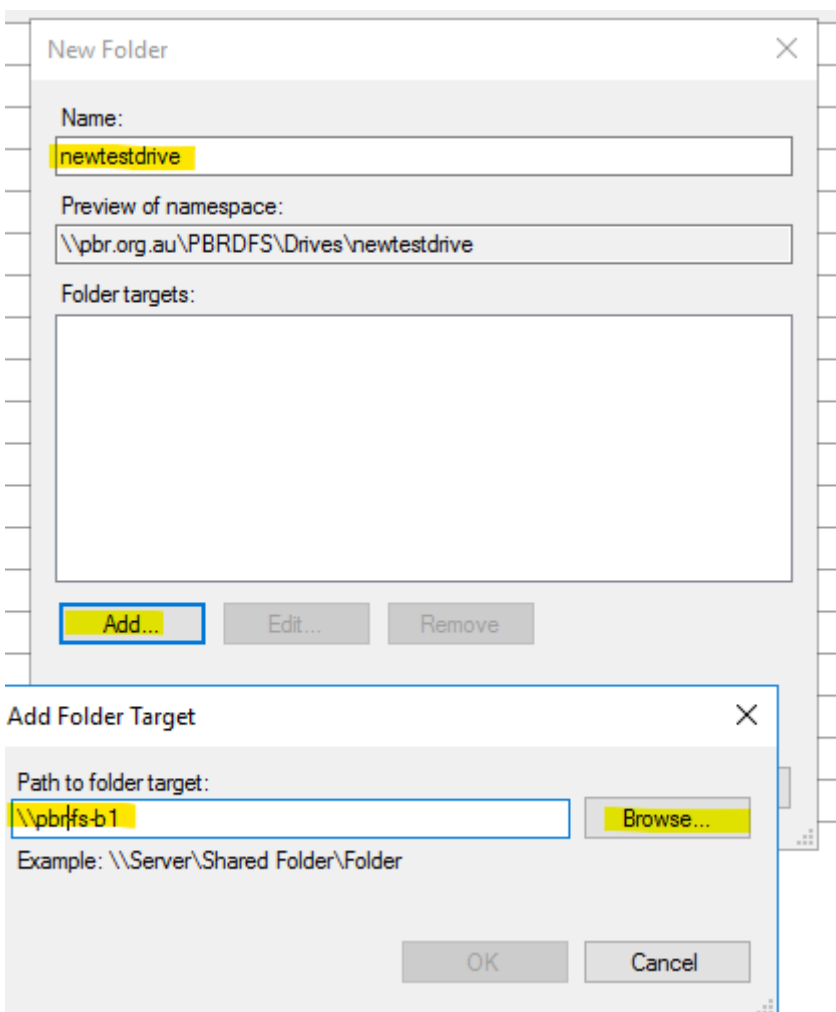
Ensure DFS management and replication roles have been installed on the other DCs. Once done go back to the DC where the namespace was first created. Open DFS and select the DFS namespace. Navigate to Namespace Servers and click Add Namespace Server and add in the other DCs.



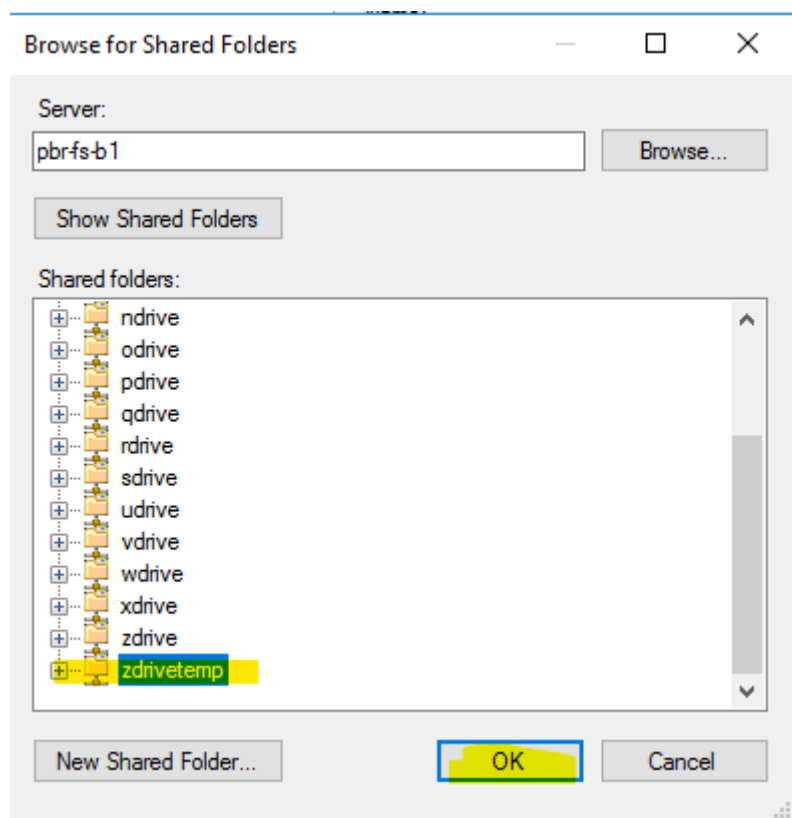
When adding a new folder target to DFS ensure to add it under the right DFS folder. For example, if I have created a new file share on a server and i want to add this to puffing billy DFS I will right click drives, select add a new folder.



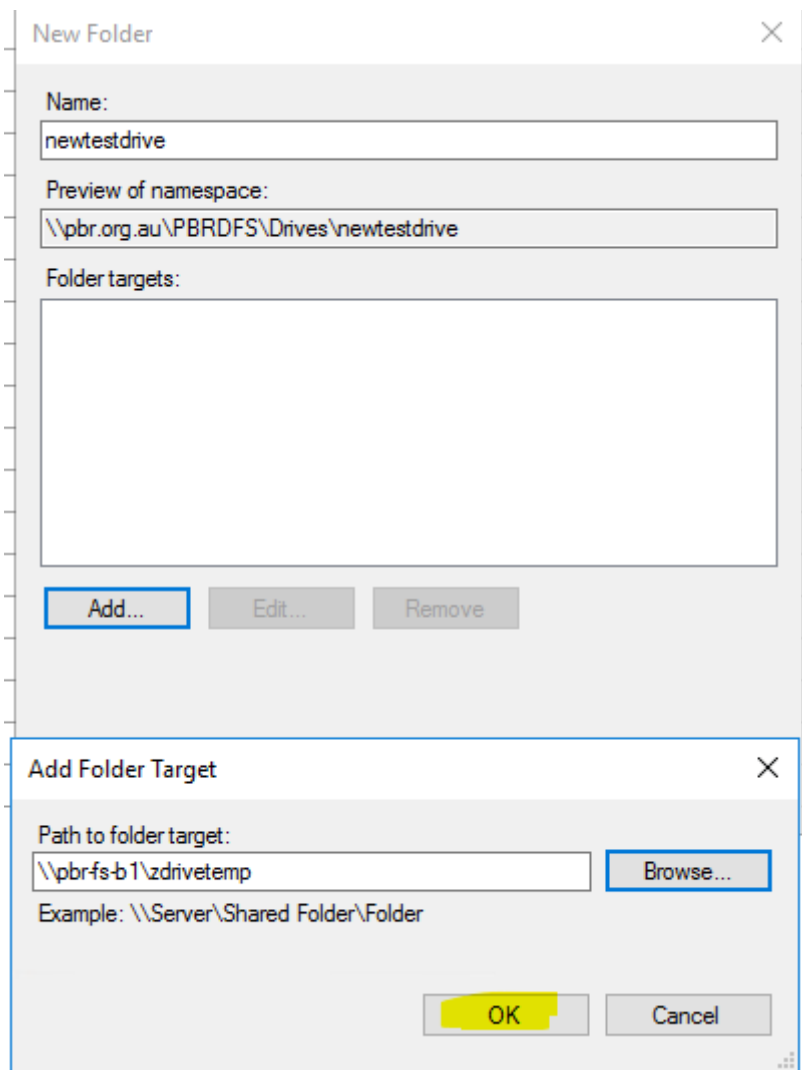
Enter the drive name or name of your choosing. Go to folder target and click add. Enter the server of where the share is located.



Select the share you want to add then click ok.



Click OK.



Revision #12

Created 30 January 2024 15:49:07

Updated 9 October 2024 03:49:59